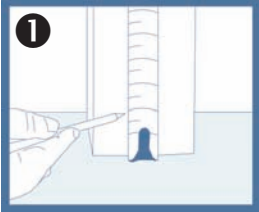




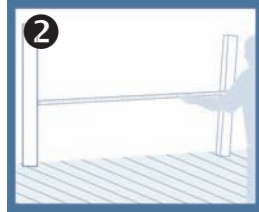
PRO V Series



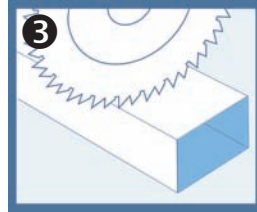
Installation Instructions



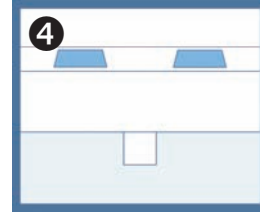
1 Determine the level placement of the bottom rail. Leave no greater than a 2" space from the level surface to the bottom of the rail. Mark this point on the mounting surface using a pencil.



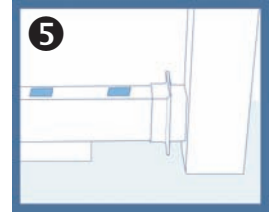
2 Measure the opening at the location where the bottom rail is to be installed. If the opening is shorter than the rail section, trim as needed.



3 When trimming, cut an even amount of material from each side. If the trimming causes the cut to be through a picket hole, shift trimming to one side of the rails. Attempt to keep the spacing from the post to the 1st picket even side to side as possible. Cut the aluminum insert & vinyl rail to the same length.

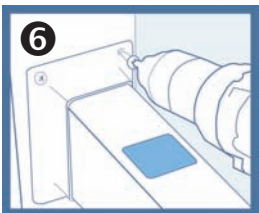


4 Attach the included support foot bracket on the underside and in the center of the bottom rail with screws provided. Then insert the support peg into the bracket.

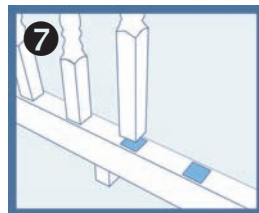


5 Position rail at required height, making sure it is plumb, level & square to the post. Mark for brackets.

Note: It is helpful to use a spacer to support the rail at the proper height.

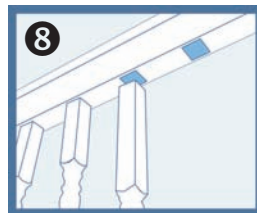


6 Slide bottom rail into place. Fasten brackets to post by screwing through the brackets into the vinyl sleeved post using self-tapping screws.

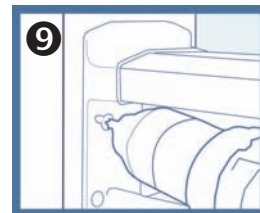


7 If needed, cut the pickets to the desired height. Install each picket into each routed hole in the bottom rail.

*For ICC compliance, the rail height cannot be less than 36" from the floor to the top of the upper rail.



8 Insert pickets into routed holes in the top rail starting at one end & working your way to the opposite end. Installing one picket at a time allow the rail to drop down onto the pickets.



9 Establish the height of the top rail & make sure it is level, plumb & square. Fasten brackets to post by screwing through the brackets into the vinyl sleeved post using self-tapping screws.



10 Once the top and bottom rails are both in place fasten them to the brackets by screwing through each side of the brackets into the sides of the rails using self tapping screws. Snap in the screw head covers.

Included Materials:

Top Rail, Bottom Rail, Reinforcement, Pickets, Support Foot & Peg, Bracket Sets With Screws.

Cleaning VI Pro Railing: Wash using a soft cloth or ordinary long-handled soft bristle brush. For difficult to remove dirt & stains use the readily available household cleaners: Vinegar & Water, Fantastic™, Murphy's Oil Soap™, Lestoil™, Lysol™, Windex™, Soft Scrub™. Do not use cleaners containing aggressive organic solvents as these could affect the surface appearance of the vinyl. Examples of such cleaners: chlorine bleach, liquid grease remover, strong soaps & detergents containing organic solvents, nail polish remover & furniture polish/cleaners.

For additional information regarding installation and code compliance, please see ESR-1850 test report at www.icc-es.org

See our other innovative products at www.vekainnovations.com