

Drink Rail Adapter Kit

Installation Instructions

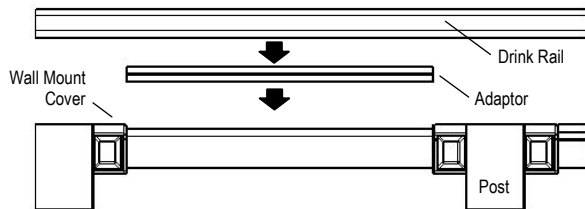


General Information

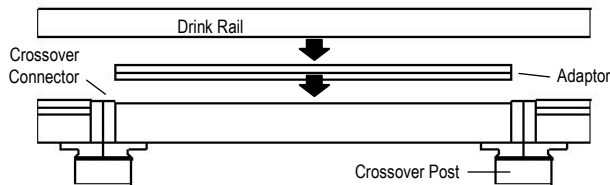
1. Adaptors are made to go over Westbury railing top rail.
2. Use an 80 tooth non-ferrous carbide blade to cut adaptor.

Standard Railing Applications

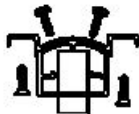
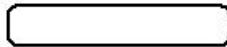
1. **a. Wall Mount:** Cut post flush with top of wall mount covers. Measure distance between wall mount covers and cut adaptor accordingly.



1. **b. Crossover:** Measure distance between crossover connectors and cut adaptor accordingly.

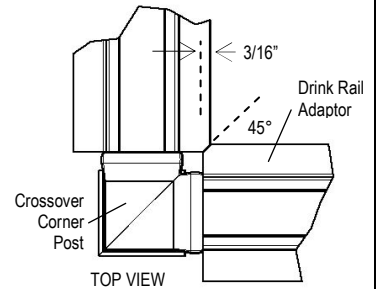


2. Place WB adaptor over top rail of Westbury railing.
3. Fasten adaptor to top rail with #10 x 5/8" pan-head self-tapping screws (provided).
4. Install Drink Rail centered on adaptor.
5. Secure drink rail to adaptor with #10 x 3/4" flat-head screws (provided).

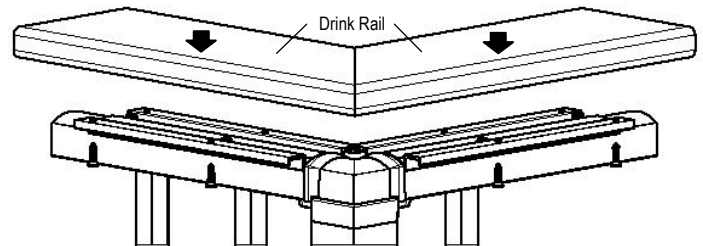
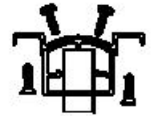


Corner Applications

1. **a. Wall Mount:** Cut post flush with top of wall mount covers. Measure distance between wall mount covers and cut adaptor accordingly. See *Standard Railing Applications* 1 a. diagram.
b. Crossover: Take 2 adaptors and cut 3/16" off inside corners of each adaptor at 45 degree angle. Measure distance between crossover connectors. Mark adaptor end away from corner for overall length and cut adaptor accordingly.



2. Place WB adaptor over top rail of Westbury railing.
3. Fasten adaptor to top rail with #10 x 5/8" pan-head self-tapping screws (provided).
4. Install Drink Rail centered on adaptor beginning with mitered corner.



5. Secure drink rail to adaptor with #10 x 3/4" flat-head screws (provided).

